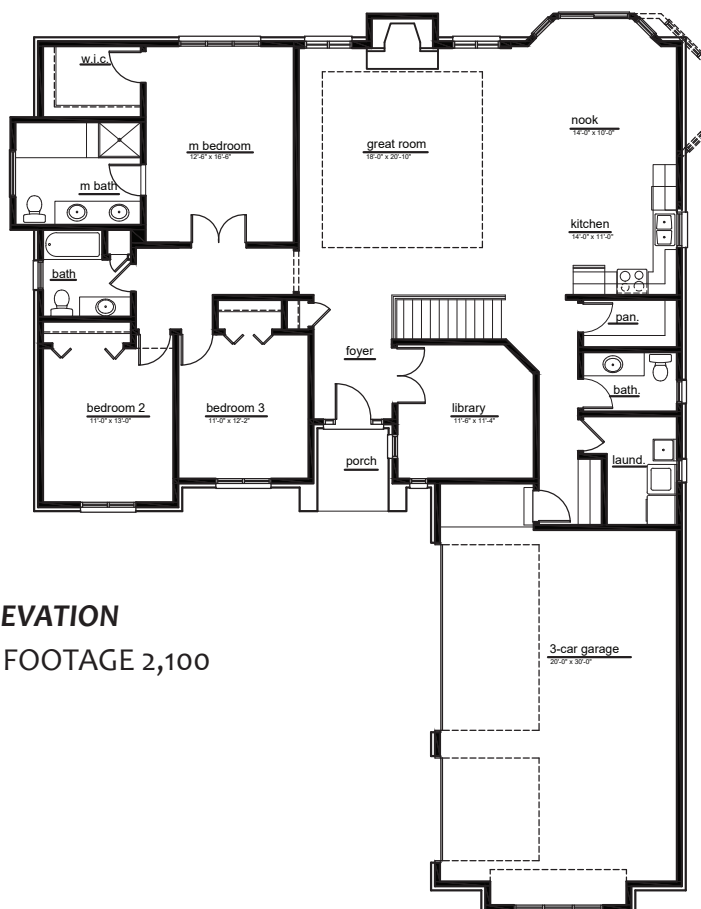




**CHERRY  
CREEK**  
BUILDING LLC

*grand javelin II*



**PREMIUM ELEVATION**  
TOTAL SQUARE FOOTAGE 2,100

This depiction represents an artist's conception of the elevation and floor plan and is not intended to be an exact representation or show specific detailing. Plans remain subject to change without notice. Drawings are not to scale. All measurements shown are approximate and not necessarily to scale. Location, size and construction of doors, windows, wall, fireplace and any other items depicted may vary depending on elevation preference or choice of options and are subject to change without notice. Some options and elevations shown may not be available in every community: see Sales Manager for details. Due to normal construction tolerances, the room sizes may vary slightly. The Builder may change home design, materials, features and methods of construction without prior notice. Model homes may contain some option features not available through the Builder.

586.752.9624 | 50169 Hayes Road | Shelby Township, MI 48315 | [cherrycreekbuilding.com](http://cherrycreekbuilding.com)